

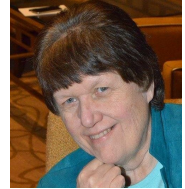
PVAEC CNA COURSE

Admission Process

The admission process is very **time sensitive**, so please set up appointments in a timely manner.

1. Meet with Eastern Maine Development Corporation (EMDC) Career Advisor

- Determine qualification for financial assistance and career advising
- Call Theresa Mudgett at 564-8196 or email tmudgett@emdc.org to make an appointment - *You'll need to meet with her in Dover, so take that into consideration - let her know you're interested in the Adult Ed CNA course*



Before you can apply for the CNA course, you must first enroll in the PVAEC Career Readiness program. Then you will be provided with an application for the CNA course. Enrollment into the Adult Education program does not guarantee acceptance into the CNA course.

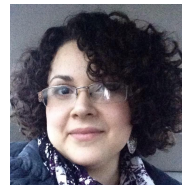
2. Intake appointment with the PVAEC Academic Advisor

- Enroll in Adult Education program
- Complete intake paperwork and CASAS assessment
- Contact Eve Salley at 564-5884 or esalley@pvaec.org to make an appointment



3. Meet with Leah Gomes - Career Readiness Instructor

- Go over CASAS scores
- Review CNA course requirements
- **Pick up CNA Application packet**



4. Turn in Application Packet to Hilda Roberts - PVAEC Dover Office

- Complete all pages of the Application Packet
- Include all required documentation
- Pay \$50 non-refundable application fee

